



ADVANZ[®] Series

Q25-2L

Two-Speed Conventional Reel

Instructions For Use

Qualia Sales and Service

Contact Us

PO Box 67402

Phone: 727-593-3100

Parts List, Reel Schematic

St. Pete Beach, FL 33736 USA

Email: info@qualiafishingreels.com

Prepare yourself for a pleasant surprise

This Advanz Conventional Reel is full of features you'd usually pay much more to own:

- GEAR RATIO 3.8 /1.5:1
- Line capacity 400 yards 50 pound mono line
- Maximum drag 29 pounds
- Weight 1.82 pounds (29 ounces)
- The drag is lever controlled with carbon fiber drag material for long life.
- Please note that this reel works best with monofilament line.
- The reel comes with the rod clamp and complete instructions.
- It has been with fish in the 30 -100 pound range trolling and bottom fishing.
- The reel has been tested with braided line up to 125 lb capacity
- We recommend using "GetSome" oil on the reel as most of the oils on the market are also cleaners and are hydrophilic, meaning they attract moisture. GetSome is made in Orlando Florida and is food grade and has been used in our reels exclusively for the last 8 years. We also recommend using INOX grease on the gears.

CARE AND MAINTENANCE

While we have done everything possible to make your Advanz Conventional Reel the highest value available, it remains a finely tuned piece of equipment that requires a minimal amount of care and maintenance. We congratulate you on your excellent choice of fishing equipment and recommend that you review the following maintenance suggestions; for the longest lasting pleasure with your tackle, we suggest adding these simple procedures to your regular fishing regimen.

BEFORE EACH FISHING TRIP

Carefully consider your choice of equipment. We all know that we cannot reasonably expect a small sports car to carry the local football team to its games; every car is designed for a certain purpose. In the same way, all fishing equipment is designed for a limited set of circumstances. For the greatest fishing performance, your choice of equipment should consider the type of fishing for which it will be used.

- Check that the line on your reel is fresh. Most lines tend to stretch and degrade over time and lose both their pull test and knot strength.
- Check that the reel has been cleaned, greased and stored properly with the drag slightly loosened.
- Check that the rod guides are all in good condition (no broken or loose rings).
- Check that the rod seat holds the reel securely in place

AFTER EACH FISHING TRIP

Clean both your rod and reel, lubricate your reel carefully, and back the drag off slightly before storing your reel. This is probably the most important recommendation for maintaining the longest working life of your reel and rod.

It is not necessary to submerge your reel in fresh water or hit it with a high-pressure blast of water. Few reels are dragged through mud or keel hauled behind a boat; therefore gently spraying your reel and rod with clean water after each fishing excursion and wiping them off thoroughly with a soft towel will take care of most cleaning requirements.

After cleaning, a light coating of a thin, high grade oil on all moving parts is recommended. While we strongly recommend using a competent service technician for maintaining the insides of your reel, we know that many folks who fish enjoy disassembling their reels both for fun and for maintenance purposes. To assist those who do disassemble their reel, the attached exploded drawing should help explain the parts and assembly of your Advanz Conventional Reel, and to help if ordering parts is required.

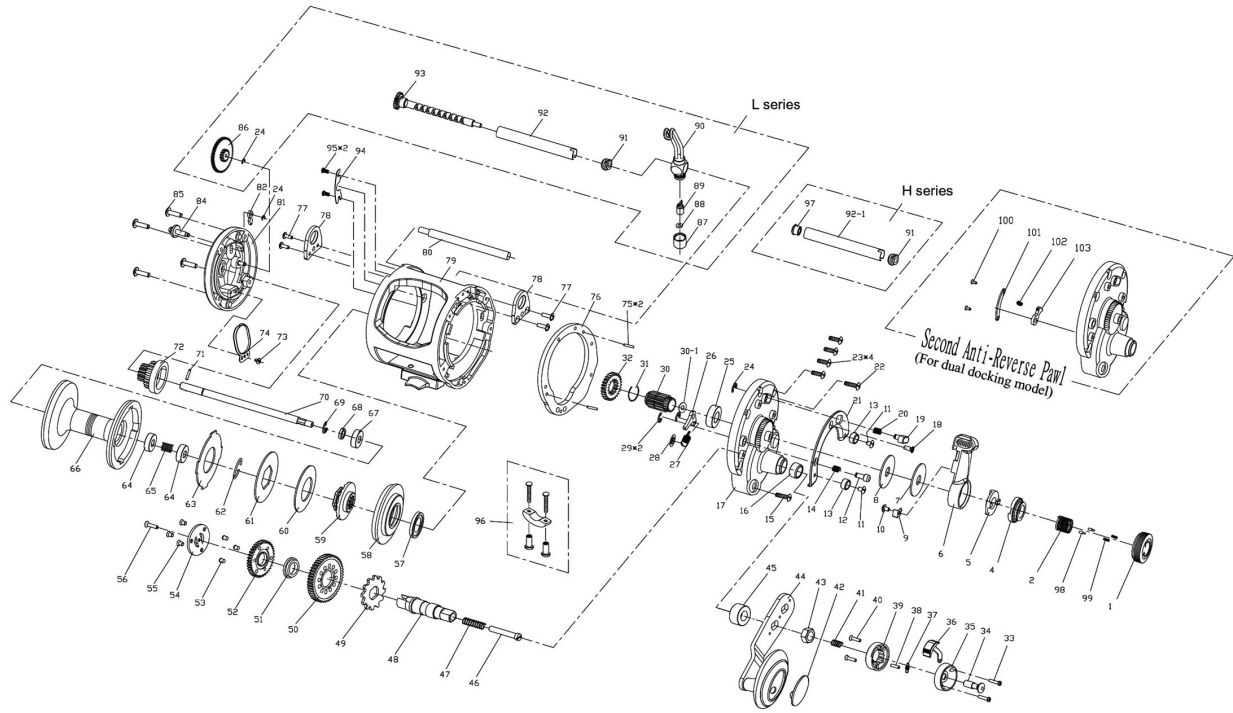
ONCE EACH SEASON

If you properly maintain your reel and rod as recommended above, it is unlikely that you will ever need to send your reel in for service. Nonetheless, we recommend an occasional trip to a service center for a professional cleaning and service of your reel.

Service centers generally use better grades of grease and oil than most folks keep on hand, and it is very helpful to have a trained eye inspect your reel occasionally to make sure no unforeseen problems are developing.

If you follow the above recommendations, you should look forward to many enjoyable fishing experiences. Thank you again for your purchase of this outstanding Advanz Conventional Reel.

PARTS SCHEMATIC



| NO | Part Name | Part Code | NO | Part Name | Part Code | NO | Part Name | Part Code | NO | Part Name | Part Code |
|----|---------------------|--|------|---------------------------|--|----|----------------------------------|-----------------------------|------|---------------------------|------------------------|
| 1 | Pre-set Knob | T20L5014.T20L5016.T20L5025 | 30 | Pinion Gear | KAM5018-2 | 58 | Waerproof Cover | KAM5012 | 84 | Click Button | KAM5003 |
| 2 | Spring | T20L5020 | 30-1 | Washer | 4009 | 59 | Brake Washer Retainer | KAM5011 | 85 | Screw(x4) | 1-33B |
| 4 | Brake Cam | KAM5108A | 31 | C Clip | KAM5077 | 60 | Spring Washer | KAM5010-1 | 86 | Osc. Cog Wheel(L) | H5026 |
| 5 | Lifter | KAM5148-1 | 32 | Pinion Gear (low speed) | KAM5076 | 61 | Brake Washer | KAM5009 | 87 | Pilot Guide Cap(L) | 3077 |
| 6 | Braker Lever | T20L5007 | 33 | Screw (x2) | 1-39 | 62 | C Clip | KAM5008 | 88 | Washer(L) | 3079 |
| 7 | Washer | KAM5111 | 34 | Shift Bottom (low speed) | KAM9034 | 63 | Drag Washer | KAM5007-1 | 89 | Pilot Guide(L) | 3078 |
| 8 | Washer | T20L5028 | 35 | Shift Housing | KAM9045 | 64 | Ball Bearing (x2) | 7*14*(SUS) | 90 | Line Carriage Assembly(L) | T20L5003-1.3075 |
| 9 | Click Plate | T10L3014 | 36 | Shift Bottom (High speed) | KAM9046.KAM9046-1 | 65 | Spring | KAM5006 | 91 | Bushing | 5173 |
| 10 | Screw | 1-35B | 37 | Spring | 3023-1 | 66 | Spool(T20) | KAM5005 | 92 | Level Wind Guard(20L) | T20L5030 |
| 11 | Screw (x2) | 1-28B | 38 | Pin | KAML3013 | 66 | Spool(T25) | KAM7003 | 92 | Level Wind Guard(25L) | T25L7004 |
| 12 | Locating Button | KAM5060 | 39 | Handle Nut Retainer | KAM9044 | 67 | Ball Bearing | 7*19*(P5) | 92-1 | Tube(20H) | T20L5031 |
| 13 | Washer (x2) | T10L3025 | 40 | Screw(x2) | 1-36 | 68 | Bushing | KAM5016-1 | 92-1 | Tube(25H) | T25L7006 |
| 14 | Spring | KAM5062-1 | 41 | Shift Spring (Heavy) | KAM9047 | 69 | E Clip | KAM5054 | 93 | Worm Shaft Assembly(T20L) | T20L5019.5170-1.H5027 |
| 15 | Screw | 1-37-1B | 42 | Handle Knob Cap | 51503-1 | 70 | Spool Shaft(T20) | T20L5012-1 | 93 | Worm Shaft Assembly(T25L) | T25L7003.5170-1.H5027 |
| 16 | Bushing | T30L9054 | 43 | Handle Nut | KAM9042 | 70 | Spool Shaft(T25) | T25L7001-1 | 94 | Level Wind Lock Plate | 3080-1 |
| 17 | Right Sideplate | T20L5005A-1.T20L5004.T10L3009-1.T10L3009-2 | 44 | Handle Assembly | V85801-1.7007A.7006-3.50903.T15L4020-1 | 71 | Spool Shaft Pin | KAM5013 | 95 | Rivet(x2) | 3081 |
| 18 | Screw | 1-27B | 45 | Bushing | T20L5009-1 | 72 | Line Out Alarm Cog Wheel | KAM5015-1 | 96 | Rod Clamp Hardware | 3105-2.8915-1*2.4108*2 |
| 19 | Locating Button | T10L3012.T10L3004 | 46 | Shift Plunger | KAM9056 | 73 | Screw | 3013 | 97 | Bushing | 5170-1 |
| 20 | Spring | T10L3022-1 | 47 | Shift Spring (Light) | KAM9048 | 74 | Click Power Spring | 3012-1 | 98 | Click Pin(x2) | V512141 |
| 21 | Fix Plate | T20L5006-1 | 48 | Main Gear Shaft | KAM9038-1 | 75 | Pin(x2) | T20L5056 | 99 | Click Spring(x2) | C155621 |
| 22 | Screw | 1-37B | 49 | Ratchet Gear | KAM5066-2 | 76 | Plate | T20L5055 | 100 | Screw(x2) | 3019 |
| 23 | Screw (x4) | 1-31B | 50 | Main Gear (High Speed) | KAM9031-1 | 77 | Screw(x4) | 5603 | 101 | Plate | T20L5088 |
| 24 | E Clip(x3) | 3011 | 51 | Lock Nut | KAM9040 | 78 | Harness Lug(x2) | T20L5027 | 102 | Spring | KAM5030-1 |
| 25 | Ball Bearing | 9*20*6(SUS) | 52 | Main Gear (Low Speed) | KAM9032 | 79 | Frame(T20) | T20L5002.KAM9017.T20L5018*4 | 103 | 2nd Anti-Reverse Pawl | T10L3021A |
| 26 | Anti-Reverse Pawl | 3021-1 | 53 | Coupling Pin (x3) | KAM9041 | 79 | Frame(T25) | T25L7002.KAM9017.T20L5018*4 | | | |
| 27 | Anti-Reverse Spring | 3023-2 | 54 | Coupling Plate | KAM9035 | 80 | Line Carriage Support Shaft(T20) | T20L5015 | | | |
| 28 | Quick Washer | 5612 | 55 | Coupling Screw (x3) | 1-38 | 80 | Line Carriage Support Shaft(T25) | T25L7005 | | | |
| 29 | E Clip(x2) | 8846 | 56 | Plunger Screw | 1-41 | 81 | Left Side Plate | T20L5001.3074-1.T20L5010 | | | |
| | | | 57 | Waterproof Washer | KAM5069 | 82 | Click Pawl | 3010 | | | |