



N30

---

## No-Load Fishing Reel

---

Instructions For Use

Qualia Service and Sales

Contact Us

PO Box 67402

Phone: 727-593-3100

Parts List, Reel Schematic

St. Pete Beach, FL 33736 USA

Email: [info@qualiafishingreels.com](mailto:info@qualiafishingreels.com)

### Prepare yourself for a pleasant surprise

This state of the art saltwater spinning reel is full of features you'd usually pay much more to own

- \* Powerful cast gearing with a machined brass pinion gear for added smoothness
- \* A smooth wide ranging multi-disc drag system with a combination of metal, Teflon and carbon fiber
- \* An infinite stop anti reverse system for the fastest possible no slip hook set
- \* An over-long bail spring for the most positive action and long bail life
- \* Six (6) stainless steel bearings for smooth action and a stainless steel one way bearing
- \* A stainless steel bearing is located in the spool so the shaft has total support the full length of the reel
- \* A forged aluminum spool to handle the highest line loads
- \* An oversize soft touch grip to make your hardest fish fight a "gripping" event
- \* A forged aluminum handle for the strength to drive this powerful reel
- \* A computer balanced rotor to ensure the vibrations you feel come from somewhere near the hook
- \* An extraordinary strong stainless steel mainshaft support over 2.5 times longer than most other reels to prevent binding from the reel base to the bearing in the top spool

---

## **CARE AND MAINTENANCE**

---

While we have done everything possible to make your NLF Saltwater Reel the highest value available, it remains a finely tuned piece of equipment that requires a minimal amount of care and maintenance. We congratulate you on your excellent choice of fishing equipment and recommend that you review the following maintenance suggestions; for the longest lasting pleasure with your tackle, we suggest adding these simple procedures to your regular fishing regimen.

---

### **BEFORE EACH FISHING TRIP**

---

Carefully consider your choice of equipment. We all know that we cannot reasonably expect a small sports car to carry the local football team to its games; every car is designed for a certain purpose. In the same way, all fishing equipment is designed for a limited set of circumstances. For the greatest fishing performance, your choice of equipment should consider the type of fishing for which it will be used.

- Check that the line on your reel is fresh. Most lines tend to stretch and degrade over time and lose both their pull test and knot strength.
- Check that the reel has been cleaned, greased and stored properly with the drag slightly loosened.
- Check that the rod guides are all in good condition (no broken or loose rings).
- Check that the rod seat holds the reel securely in place

---

### **AFTER EACH FISHING TRIP**

---

Clean both your rod and reel, lubricate your reel carefully, and back the drag off slightly before storing your reel. This is probably the most important recommendation for maintaining the longest working life of your reel and rod.

It is not necessary to submerge your reel in fresh water or hit it with a high-pressure blast of water. Few reels are dragged through mud or keel hauled behind a boat; therefore gently spraying your reel and rod with clean water after each fishing excursion and wiping them off thoroughly with a soft towel will take care of most cleaning requirements.

After cleaning, a light coating of a thin, high grade oil on all moving parts is recommended. While we strongly recommend using a competent service technician for maintaining the insides of your reel, we know that many folks who fish enjoy disassembling their reels both for fun and for maintenance purposes. To assist those who do disassemble their reel, the attached exploded drawing should help explain the parts and assembly of your NLF Reel, and to help if ordering parts is required.

---

### **ONCE EACH SEASON**

---

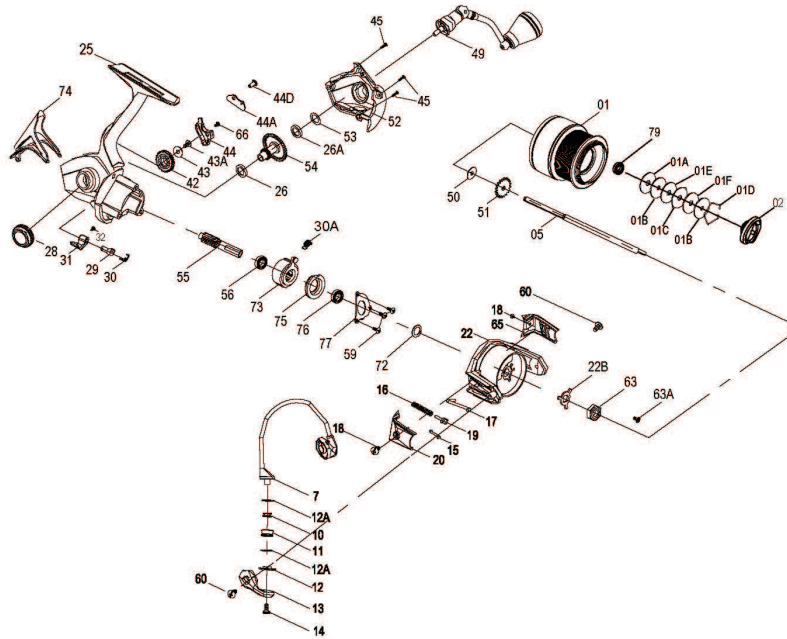
If you properly maintain your reel and rod as recommended above, it is unlikely that you will ever need to send your reel in for service. Nonetheless, we recommend an occasional trip to a service center for a professional cleaning and service of your reel.

Service centers generally use better grades of grease and oil than most folks keep on hand, and it is very helpful to have a trained eye inspect your reel occasionally to make sure no unforeseen problems are developing.

If you follow the above recommendations, you should look forward to many enjoyable fishing experiences. Thank you again for your purchase of this outstanding NLF Reel.

**PARTS SCHEMATIC**

**N30**



NO	PARTS DESCRIPTION	NO	PARTS DESCRIPTION
1	SPOOL	31	A/R SWITCH
01A	TEFLON WASHER	32	A/R SWITCH SCREW
01B	METAL WASHER	42	OSCILLATION GEAR
01C	EARED WASHER	43	OSCILLATION GEAR WASHER
01E	CARBON WASHER	43A	OSCILLATION GEAR SCREW
01F	FELT WASHER	44	SLIDE
01D	DRAG RETAINER SPRING	44A	SLIDE CLIP
2	DRAG KNOB ASSY	44D	SLIDE CLIP SCREW
5	MAIN SHAFT	45	SIDE COVER SCREW(*3)
7	BAIL WIRE ASSY	49	HANDLE ASSY
10	ROLLER BALL BEARING	50	MAIN SHAFT WASHER
11	LINE ROLLER	51	MAIN SHAFT RATCHET
12	ROLLER METAL WASHER	52	SIDE COVER
12A	ROLLER TEFLON WASHER(*2)	53	MAIN GEAR WASHER
13	BAIL ARM	54	MAIN GEAR
14	BAIL ROLLER SCREW	55	PINION GEAR
15	BAIL ARM SPRING SHAFT	56	PINION LOWER BEARING
16	BAIL ARM SPRING	59	BALL BEARING SCREW (*3)
17	BAIL TRIP LEVER	60	ROTOR ARM SCREW(*2)
18	BAIL ARM COVER SCREW(*2)	63	ROTOR NUT
19	BAIL ARM SPRING GUIDE	63A	HEX NUT RETAINED SCREW
20	ROTOR ARM COVER	65	ROTOR WEIGHT COVER
22	ROTOR ASSY	66	SLIDER SCREW
22B	ROTOR RETAINED PLATE	72	CLUTCH BB WASHER
25	MAIN HOUSING	73	CLUTCH BB ASSY
26	MAIN BODY BALL BEARING	74	REAR COVER
26A	SIDE COVER BALL BEARING	75	CLUTCH BB SUPPORT
28	HANDLE SCREW COVER	76	PINION UPPER BEARING
29	A/R SHAFT	77	CLUTCH BB COVER
30	A/R SHAFT SPRING	79	SPOOL BEARING
30A	A/R PULLING SPRING		