



[www.qualiafishingreels.com](http://www.qualiafishingreels.com)

**(727) 593-3100**



PO Box 67402

St. Pete Beach, Florida 33736

[www.qualiafishingreels.com](http://www.qualiafishingreels.com)

**(727) 593-3100**



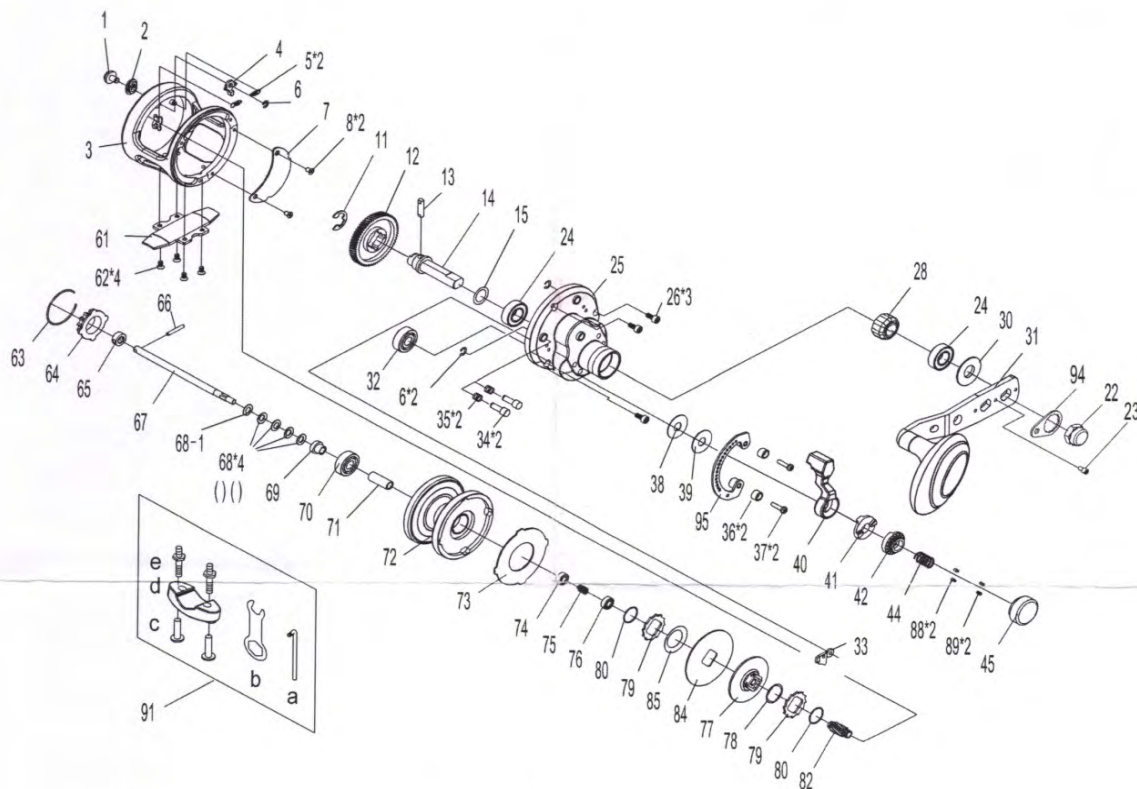
## Qualia Q12-WAM Single-Speed Reel Features:

- A CNC billet-machined main frame which provides the maximum possible frame rigidity.
- A CNC aluminum side plate that matches the mainframe for greatest strength and provide the best parts alignment and interior water resistance.
- A CNC billet-machined spool ensures maximum material consistency and strongest line support.
- All # 404 stainless steel heat treated gearing provides superior strength plus corrosion and wear resistance.
- The micro drag control makes this reel a live bait master.
- A stainless steel foot means that your reel will always have the strongest possible attachment to your rod.
- Cold-forged adjustable aluminum lever drag which will provide years of dependable use.
- A dual stainless steel ON/OFF spool clicker that broadcasts an audible alarm when line is being stripped from the reel.
- A positive anti-reverse system means consistent, maximum stopping strength.
- The comfort-touch grip helps keeps your hand from fatigue and in the fight for hour after hour of hard fishing.
- The spool shaft is sleeved between the bearings so the spool can be filled directly with 100% braid without spool collapse-no need for backing.
- Ball Bearings are "Tenex" shielded stainless steel for corrosion resistance and a long trouble free life.
- The drag lever base has a water proofing seal underneath to prevent water intrusion into the reel.
- An external micro drag adjustment to allow for 15 different drag settings.
- Drag material is carbon fiber
- A rod clamp is also included which is made from high strength solid Graphite with stainless steel hardware.
- Gear Ratio standard is 6.29:1
- 7 Tenex stainless steel shielded bearings
- Line capacity, 350 yards 20 lb. mono, 500 yards 50 lb braid
- Weight 21 ounces
- Maximum drag 25+ pounds
- Line retrieve is over 50 inches of line per 360 degree handle rotation
- Warranty is one year all parts and labor.
- Reel is shown with the optional Power Handle



**qualia**

# Q14WAM PARTS LIST



**NO. Part Name**

- 1 Click Button
- 2 Click Support
- 3 Frame
- 4 Click Pawl
- 5 Click Spring (x2)
- 6 E. Clip (x3)
- 7 Gear Cover
- 8 Cover Screw (x2)
- 11 E. Clip
- 12 Drive Gear (6.2:1)
- 13 Pin
- 14 Drive Shaft
- 15 Washer
- 22 Handle Nut
- 23 Screw
- 24 Drive Shaft Ball Bearing (x2)
- 25 Right Side Plate
- 26 Right Side Plate Screw (x3)
- 28 One-Way Roller Bearing
- 30 Washer
- 31 Handle Assembly
- 32 Pinion Ball Bearing

**NO. Part Name**

- 33 Dog Assembly
- 34 Locating Button (x2)
- 35 Spring (x2)
- 36 Stopper (x2)
- 37 Screw (x2)
- 38 Washer
- 39 Washer
- 40 Brake Lever
- 41 Lifter
- 42 Brake Cam
- 44 Spring
- 45 Pre-Set Knob
- 61 Reel Foot
- 62 Reel Foot Screw (x4)
- 63 C-Clip
- 64 Line Out Alarm Cog. Wheel
- 65 Shaft Shoulder
- 66 Shaft Pin
- 67 Spool Shaft
- 68 Disc Spring Washer (x4)
- 68-1 Washer
- 69 Bushing

**NO. Part Name**

- 70 Ball Bearing
- 71 Tube
- 72 Spool
- 73 Carbon Fiber Brake Washer
- 74 Ball Bearing
- 75 Spring
- 76 Ball Bearing
- 77 Brake Disc
- 78 Washer
- 79 Ratchet Gear (x2)
- 80 C-Clip (x2)
- 82 Pinion Gear (6.2:1)
- 84 Brake Washer
- 85 Disc Spring
- 88 Click Pin (x2)
- 89 Click Spring (x2)
- 91 Rod Clamp Hardware
- 94 Retainer
- 95 Click Plate